



**Tractor**  
weights



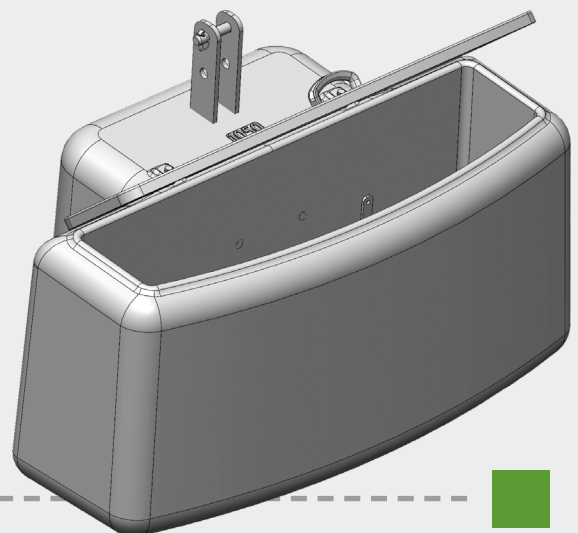
MINERAL COUNTERWEIGHTS

TECHNICAL MINERAL PARTS

HEAVY WEIGHT CONCRETE



**TRACTOR**  
weights



# THE ECO/TOP SERIES

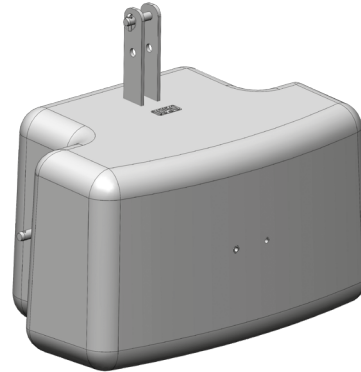
## THE AFFORDABLE ALTERNATIVE.

### TW-ECO

The ECO series is a cost-effective, attractive alternative.

Weight series KAT2:

450 kg, 600 kg, 750 kg, 900 kg, 1050 kg, 1450 kg



### The advantages

ECO/TOP



The flat design allows the headlights to illuminate better.



Threaded inserts allow a shunting coupler to be attached at a later date.



The entire weight has a glossy finish.



Our front weights are easy, quick and effortless to attach and detach from your front hydraulics thanks to standard-compliant suspensions.



Your front hydraulics and the counterweight always balance the load on your tractor evenly.



Your front hydraulics and the weight form a unit to utilise and protect your tractor.



Due to the standardisation, the front weight also fits in the rear hydraulics of your tractor. The weights are easy to use as a rear weight with top link.



### TW-TOP

The TOP series is based on the cost-effective ECO weights.

The TOP series is already equipped with a manoeuvring coupling.

The side reflectors increase safety on driveways. Customer-specific logos and colours are possible.

KAT2 weight series:

450 kg, 600 kg, 750 kg, 900 kg, 1050 kg, 1450 kg.



# THE BOX-SERIES

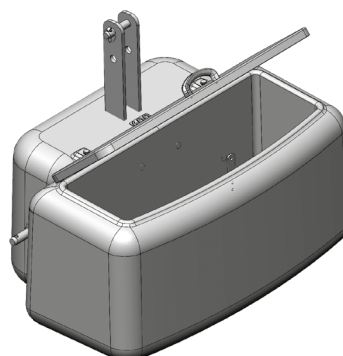
## WITH A SMART STORAGE COMPARTMENT.

### TW-BOX I

The BOX series has a storage compartment with a volume of 105l.

The compartment can be locked with a fibreglass lid.

Weight series KAT2: 600 kg, 700 kg, 800 kg, 900 kg, 1000 kg

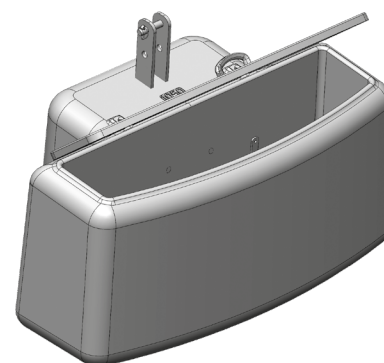


### TW-BOX II

The BOX series has a storage compartment with a volume of 160l.

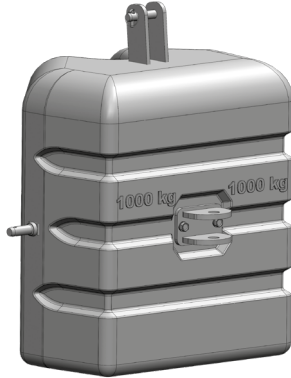
The compartment can be locked by means of a fibreglass lid.

Weight series KAT2: 1050 kg, 1250 kg, 1450 kg, 1550 kg, 1750 kg



# THE TW-B SERIES

## THE ORIGINAL.



### TW-B

This design has now proven itself on the market for over 30 years.

Weight series KAT2:

300 kg, 400 kg, 600 kg, 800 kg, 1000 kg, 1200 kg, 1500 kg

### The advantages



Our weights are cast from high-quality reinforced concrete in a visually appealing design. The entire weight is glossy lacquered.



The weights 300 kg up to and including 1000 kg hang in balance, which makes it easier to attach the top link.



Our weights are all equipped with a manoeuvring coupling, which makes it possible to quickly couple and uncouple vehicles.



Our front weights can be attached and detached from your front hydraulics easily, quickly and without effort thanks to standard-compliant suspensions.



Your front hydraulics and the counterweight always load your tractor evenly.



Wear-promoting overloads of the front axles due to expensive cast weights are a thing of the past.



Front hydraulics and the weight form a unit to optimise the load and protect your tractor.



Due to the standardisation, the front weight also fits in the rear hydraulics of your tractor. The weights are easy to attach as a rear weight with top link.

### TW-B

With KAT3 bolt:  
1700 kg

The following weights with KAT3 bolts are also available on request: 600 kg, 800 kg, 1000 kg, 1200 kg, 1500 kg





# THE TW-NG SERIES

## THE NEWER GENERATION.

### TW-NG

The elegant design with raised logo has been highly appreciated in the market for years.

Weight series KAT2: 400 kg, 650 kg, 900 kg, 1100 kg, 1500 kg



### The advantages



The design fits elegantly on any tractor.



The rearwardly shifted pick-up point results in a higher efficiency of the weight on the axle.



Our weights are cast from high-quality reinforced concrete in a visually appealing design. The entire weight is varnished with a glossy finish.



With raised customer logo possible.



Wear-promoting overloads of the front axles due to expensive cast weights are a thing of the past.



The front weight also fits into the rear hydraulics of your tractor due to the standardisation. The weights are easy to use as a rear weight with top link.

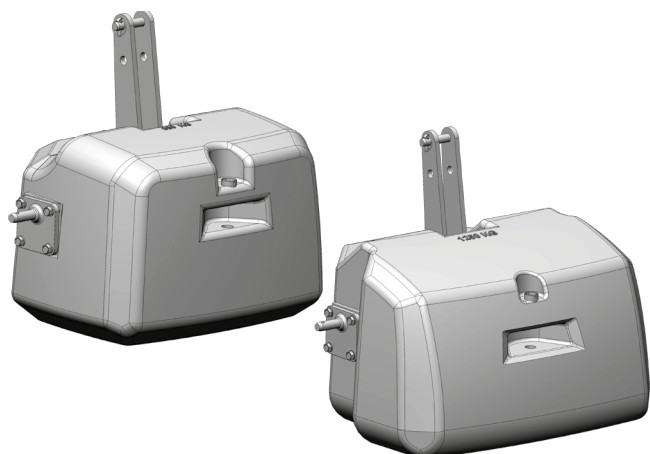


Our weights are all equipped with a manoeuvring coupling, which makes it possible to quickly couple and uncouple vehicles.



# THE TW-MAG SERIES

## THE COMPACT ONES.



### TW-MAG

The compact weights can be supplied as KAT2 or with KAT3 bolts due to their interchangeable side plates.

Weight series KAT2 or KAT3:  
600 kg, 800 kg, 900 kg, 1000 kg, 1250 kg,  
1400 kg, 1600 kg, 1800 kg, 2000 kg,

Weight series KAT3:  
2200 kg, 2500 kg  
3000 kg and 3200 kg on request

### The advantages



Customer logos can be applied in relief.



Thanks to magnetite casting, TW-MAG weights are very compact on the tractor.



Thanks to the latest moulding and casting techniques, these weights are characterised by even more beautiful surfaces.



Top link tower as well as pin plates are bolted and thus exchangeable.



Our weights are all equipped with a manoeuvring coupling, which makes it possible to quickly couple and uncouple vehicles.



Due to the standardisation, the front weight also fits in the rear hydraulics of your tractor. The weights are easy to use as a rear weight with top link.

### Drive-In

Drive-In is our adaptive solution. With the semi-automatic locking system, an additional weight can be picked up while driving.

Weight range:  
Basic weight (magnetite cast iron)  
800 kg, 1000 kg

Additional weight (grey cast iron)  
400 kg, 600 kg



# THE GUSSCOM SERIES

## THE ALTERNATIVE FROM GREY IRON CASTING.



### GUSSCOM

The very compact grey iron weights can be supplied as KAT2 or with KAT3 bolts due to their exchangeable side plates.

Weight series KAT2 or KAT3:  
600 kg, 800 kg, 1000 kg, 1250 kg, 1500 kg,

adaptive additional weight 500 kg

### The advantages



Due to grey iron casting, Gusscom weights are the most compact on the tractor.



The Gusscom weights can be extended by 500 kg with an additional weight.



Top link tower as well as pin plates are bolted and thus exchangeable.



Our weights are all equipped with a manoeuvring coupling, which makes it possible to quickly couple and uncouple vehicles.



Due to the standardisation, the front weight also fits in the rear hydraulics of your tractor. The weights are easy to use as a rear weight with top link.





# THE TW-WHEEL SERIE

## THE WHEEL WEIGHT.

### TW-WHEEL

The high quality cast iron wheel weight.

Stable and easy ballasting of the rear axle for your tractor. Mounting of 2 weights per rim possible.

TW-Wheel  
300 kg | 2x300 kg



### The advantages



An innovative variable adapter plate allows mounting in the hole circle of many tractor rims.



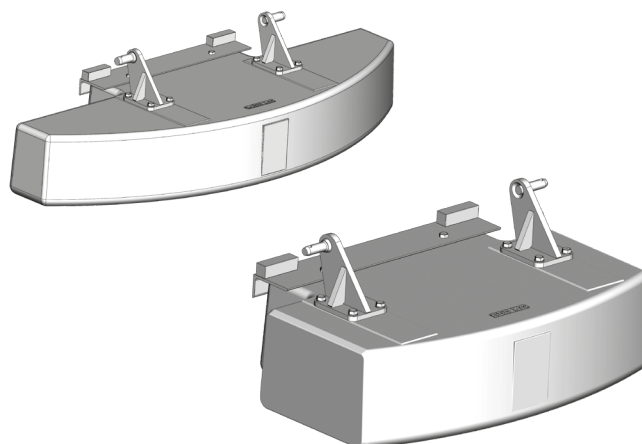
Alternatively, mounting on the axle rim is possible using a second adapter plate.

# THE TW-REAR SERIES REARWEIGHTS.

## REAR

Due to the flat design, the rear weight can be used underneath many drawbars. This allows the weight as well as a trailer to be carried in the towing jaw.

Weight series KAT2 or KAT3:  
600 kg, 900 kg, 1250 kg, 1450 kg



## GENERAL INFO

### The right choice

The right choice of weight saves fuel and thus protects our environment and your finances.

Weights have different tasks in today's world. With the further technologisation of agriculture, balancing forces and masses has become more and more important. With the increasing power of tractors, ballasting becomes more necessary in addition to ballasting out. By adding mass, the increased power-to-weight ratio can minimise slippage.

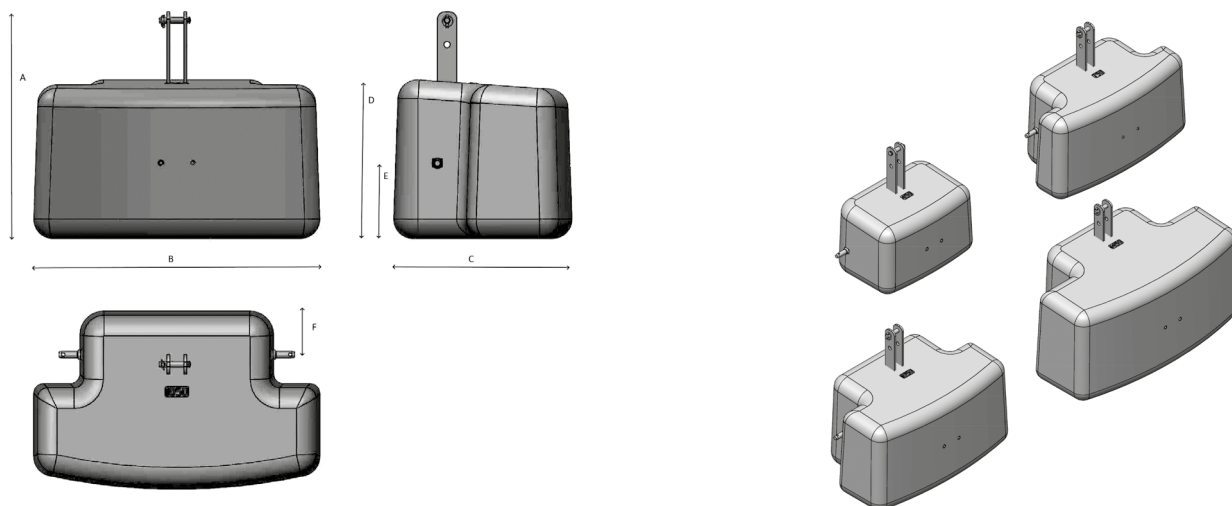
### Balancing

With the advent of the front loader, the balancing weight in the rear hydraulics has become necessary in order to have the axle loads not only on the front axle when the buckets are loaded.

Nowadays, with the large lifted implements in the rear hydraulics, it is necessary to balance the load with our weights in the front hydraulics. By choosing the right weight, the specified axle loads of the tractor manufacturers can be complied with. The power of the tractor can again be used in the best possible way via the all-wheel drive.

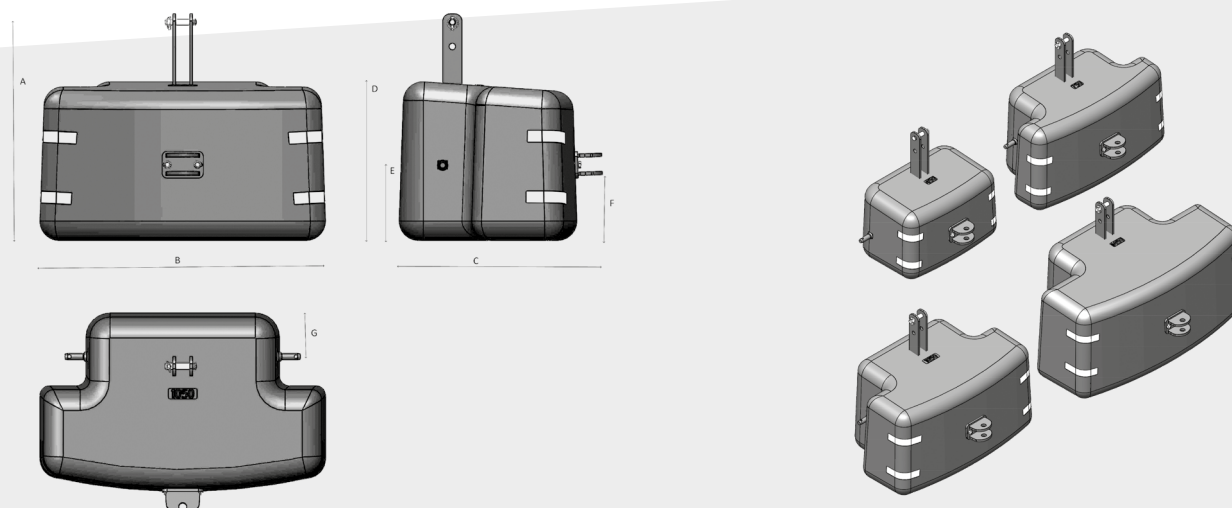
# OVERVIEW ECO-LINE

Model	A [mm]	B [mm]	C [mm]	D [mm]	E [mm]	F [mm]
450 kg ECO	800	800	530	515	210	140
600 kg ECO						
750 kg ECO	890	1150	600	625	300	150
900 kg ECO						
1050 kg ECO	900	1180	735	655	310	160
1450 kg ECO	910	1440	825	700	320	160



# OVERVIEW TOP-LINE

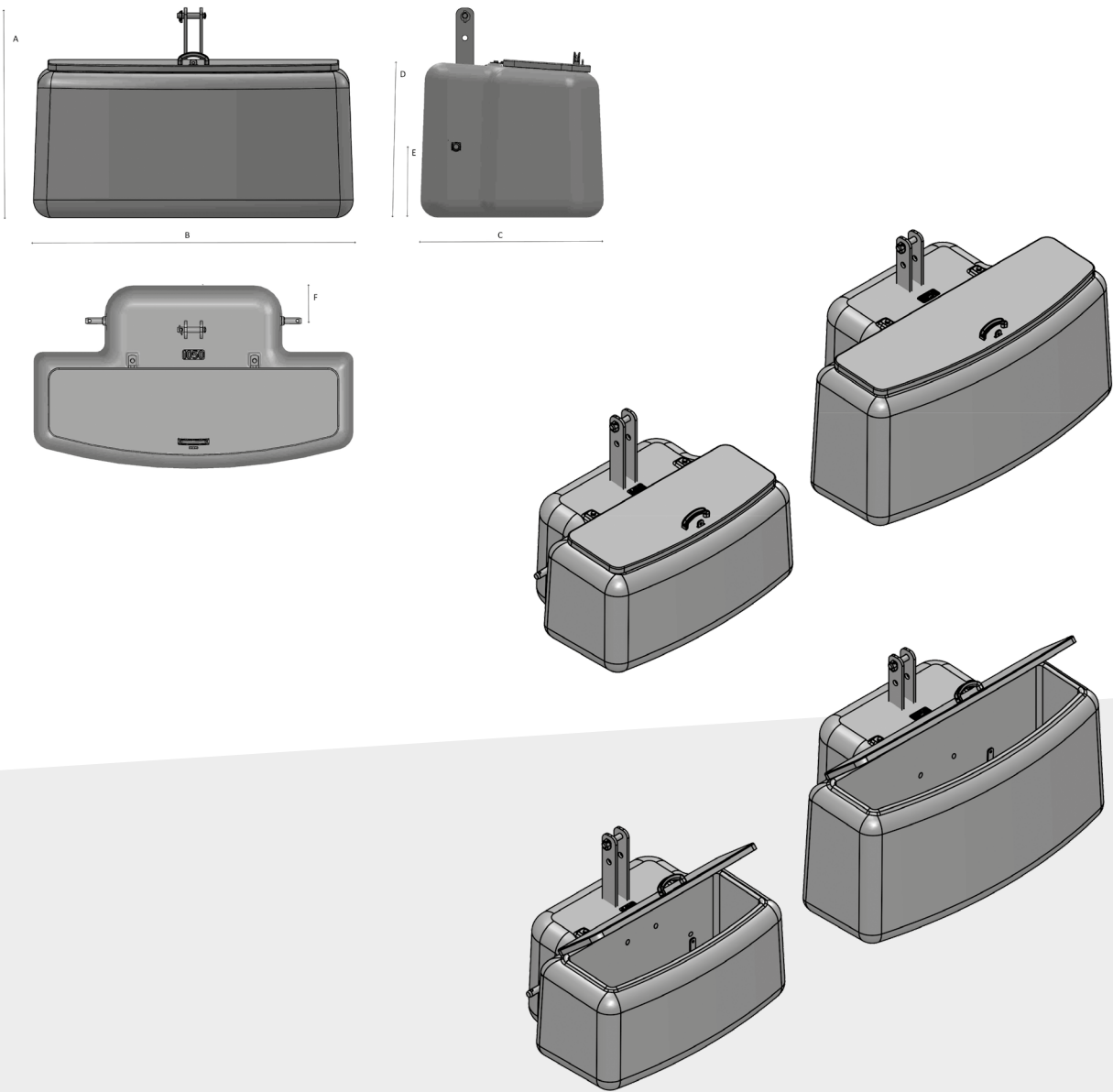
Model	A [mm]	B [mm]	C [mm]	D [mm]	E [mm]	F [mm]	G [mm]
450 kg TOP	800	800	640	515	210	190	140
600 kg TOP							
750 kg TOP	890	1150	710	625	300	255	150
900 kg TOP							
1050 kg TOP	900	1180	845	655	310	270	160
1450 kg TOP	910	1440	935	700	320	285	160





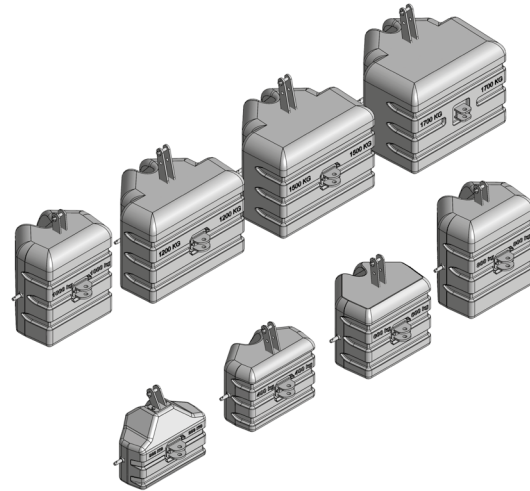
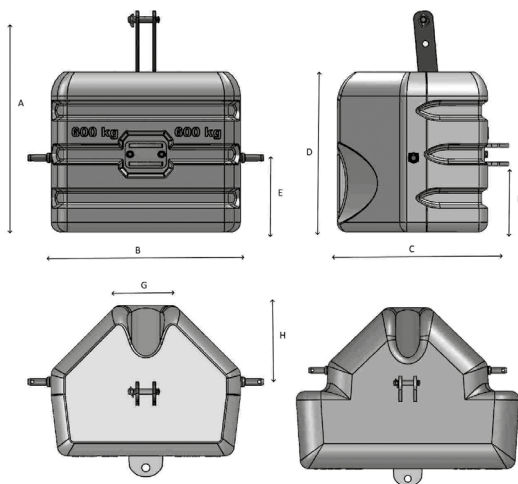
# OVERVIEW TW-BOX

Model	A [mm]	B [mm]	C [mm]	D [mm]	E [mm]	F [mm]	Storage [l]
600 kg TW-BOX I	840	1100	760	534	250	160	105
700 kg TW-BOX I							
800 kg TW-BOX I							
900 kg TW-BOX I							
1000 kg TW-BOX I							
1050 kg TW-BOX II	910	1440	825	700	320	160	160
1250 kg TW-BOX II							
1450 kg TW-BOX II							
1550 kg TW-BOX II							
1750 kg TW-BOX II							



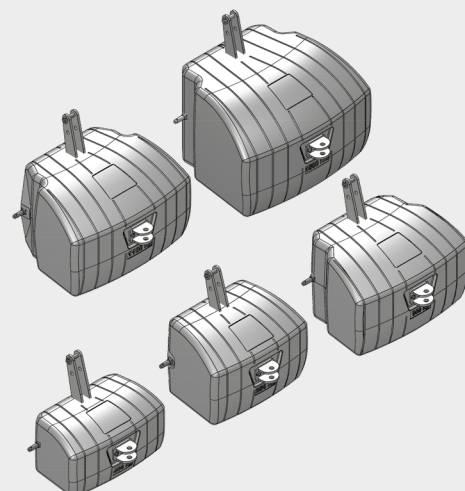
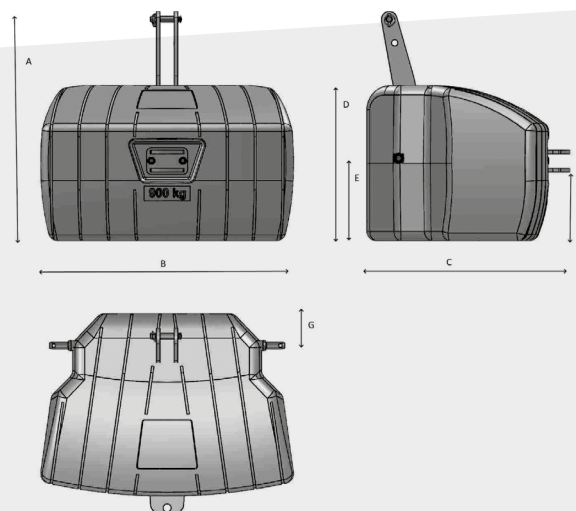
# OVERVIEW TW-B

Model	A [mm]	B [mm]	C [mm]	D [mm]	E [mm]	F [mm]	G [mm]	H [mm]
250 kg TW-B	685	770	430	560	230	190	340	220
300 kg TW-B								
400 kg TW-B	775	770	480	580	290	220	270	245
600 kg TW-B	875	780	600	660	305	290	220	315
800 kg TW-B	1005	780	600	860	410	290	250	320
1000 kg TW-B								
1200 kg TW-B	1060	1110	770	800	365	470	220	300
1500 kg TW-B	1060	1110	870	800	365	570	220	300
1700 kg TW-B	1060	1110	970	800	365	670	220	300



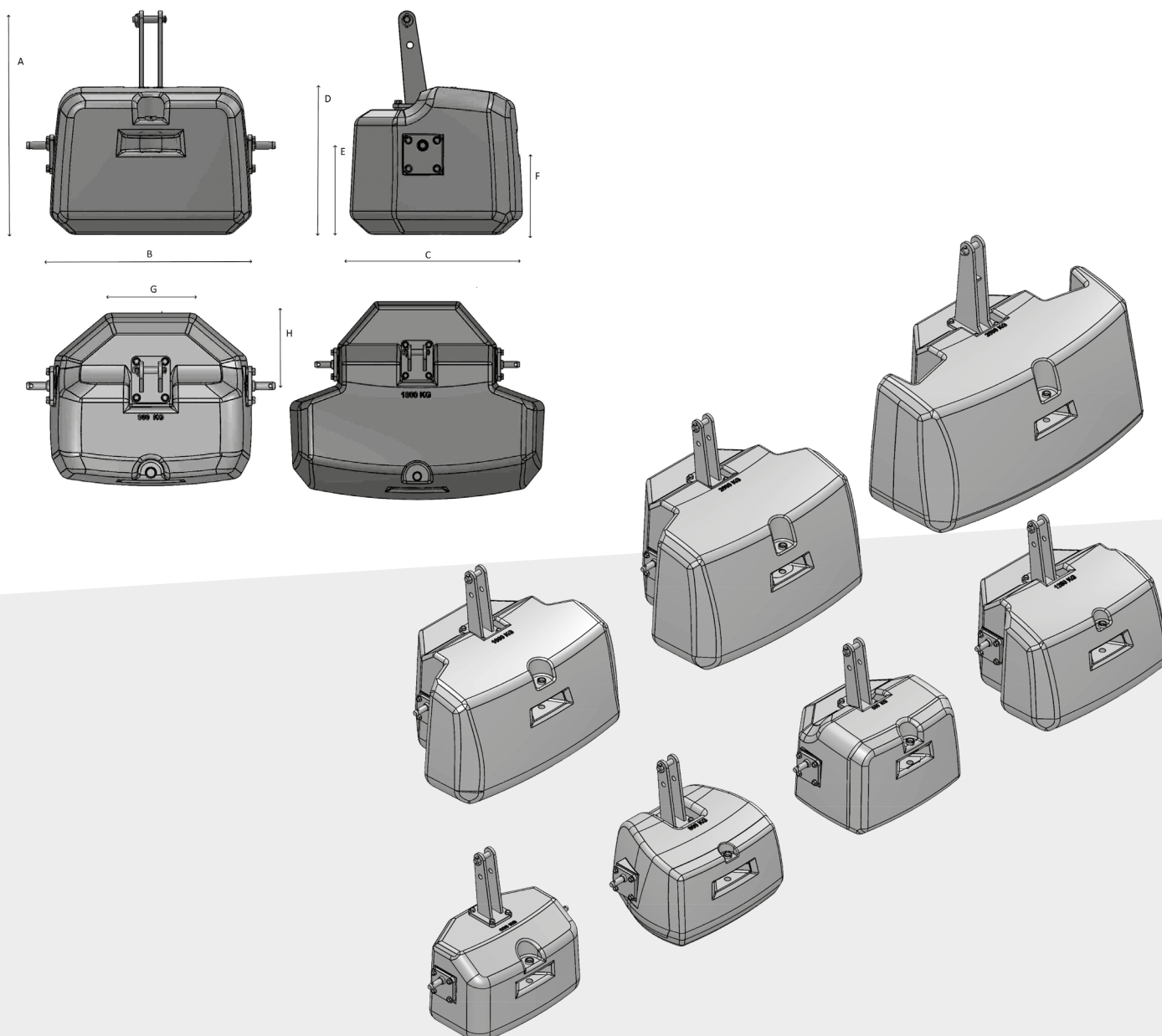
# OVERVIEW TW-NG

Model	A [mm]	B [mm]	C [mm]	D [mm]	E [mm]	F [mm]	G [mm]
400 kg TW-NG	715	880	530	470	270	200	100
650 kg TW-NG	845	870	600	600	320	265	110
900 kg TW-NG	915	1000	750	640	335	270	110
1100 kg TW-NG	955	1100	800	680	350	300	110
1500 kg TW-NG	1025	1180	970	750	390	330	110



# OVERVIEW TW-MAG

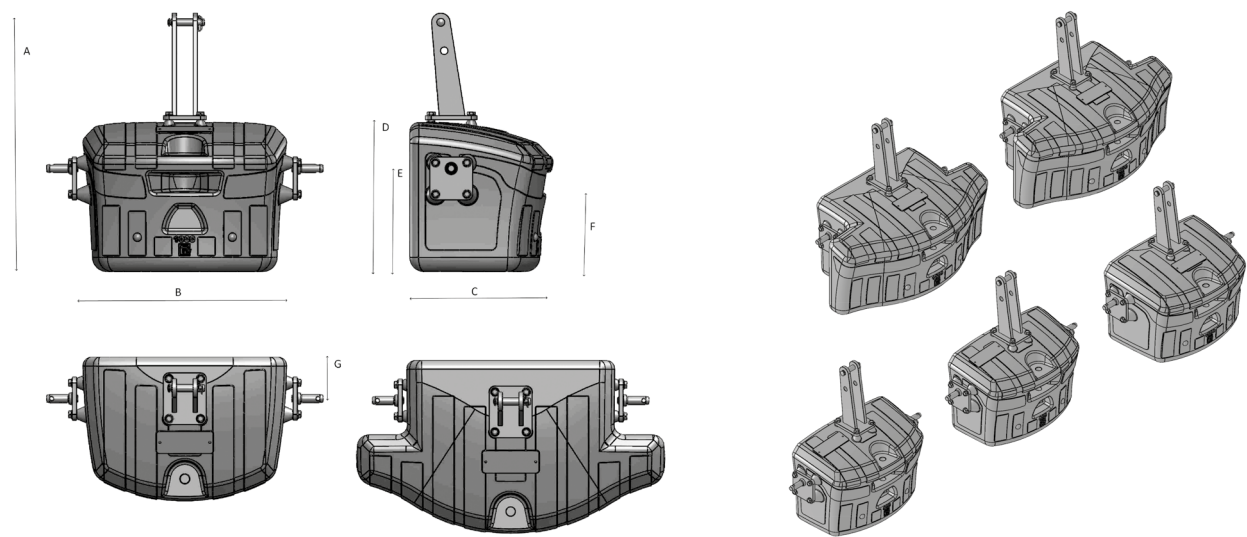
Model	A [mm]	B [mm]	C [mm]	D [mm]	E [mm]	F [mm]	G [mm]	H [mm]
600 kg TW-MAG	860	760	490	500	330	500	380	220
800 kg TW-MAG	780	760	640	500	300	500	430	220
900 kg TW-MAG	840	770	665	565	335	480	315	275
1000 kg TW-MAG	780	890	785	600	345	510	380	265
1250 kg TW-MAG								
1400 kg TW-MAG	930	1150	800	650	345	580	380	280
1600 kg TW-MAG								
1800 kg TW-MAG	960	1200	900	695	345	620	380	285
2000 kg TW-MAG								
2200 kg TW-MAG	1180 1180	1540 1540	875 875	760 760	375 375	690 690	380 380	285 285
2500 kg TW-MAG								
3000 kg TW-MAG								
3200 kg TW-MAG								





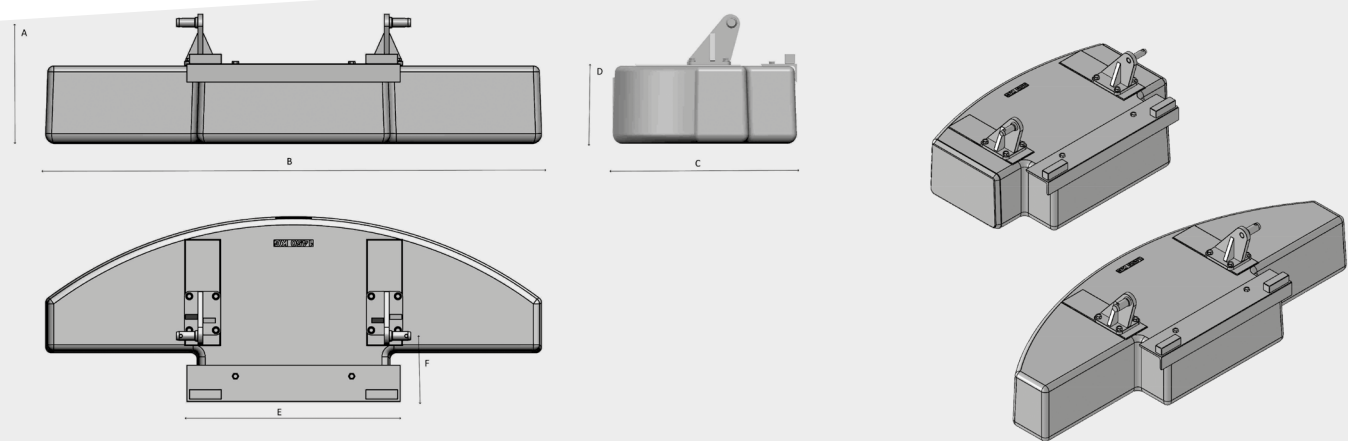
# OVERVIEW GUSSCOM

Model	A [mm]	B [mm]	C [mm]	D [mm]	E [mm]	F [mm]	G [mm]
600 kg GUSSCOM	865	710	415	520	350	275	135
800 kg GUSSCOM							
1000 kg GUSSCOM	870	710	500	520	360	275	145
1250 kg GUSSCOM	875	1075	600	520	360	275	140
1500 kg GUSSCOM							
500 kg GUSSCOM ADD	570	965	300	520		285	

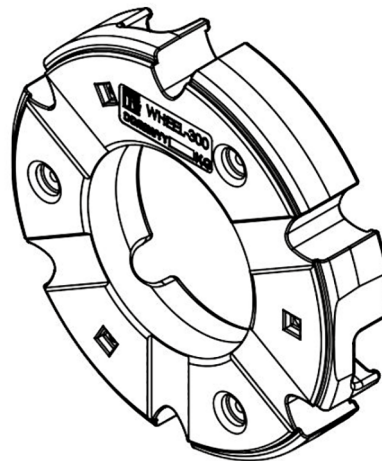
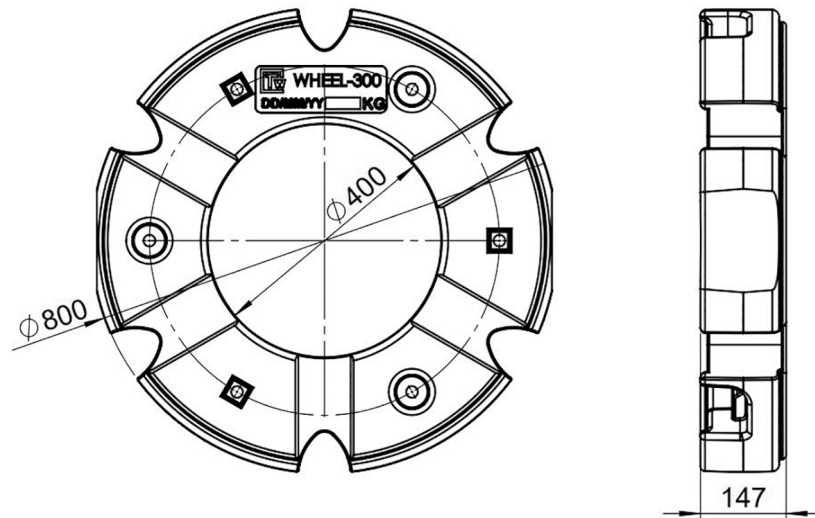


# OVERVIEW TW-REAR

Model	A [mm]	B [mm]	C [mm]	D [mm]	E [mm]	F [mm]
600 kg REAR	500	1160	760	320	880	270
900 kg REAR		1160	760	320	880	270
1250 kg REAR	500	2050	760	320	880	270
1450 kg REAR		2050	760	320	880	270



# OVERVIEW TW-WHEEL



TW-WHEEL 300 kg

# SALES PARTNER



## TEST WEIGHTS

- Single weights
- Test weightsystem for industry and workshop
- from 100 kg to 30 t

## Tenwinkel GmbH & Co.KG

Tenwinkel GmbH & Co.KG

Max-Planck-Str. 31  
48691 Vreden

Tel: +49 (0) 2564-394938-0  
Fax: +49 (0) 2564-394938-99

E-Mail: [order@tenwinkel.com](mailto:order@tenwinkel.com)  
[www.tenwinkel.com](http://www.tenwinkel.com)



WE ARE  
**THE** GLOBAL  
ALTERNATIVE  
IN MATERIAL  
AND DESIGN!



DIN EN ISO 9001

